

SCHROEDER'S TUXEDO MANOR.

AN ADDITION TO THE CITY OF STUART. MARTIN COUNTY. FLORIDA.
BEING A SUBDIVISION OF THE N 1/2 OF THE S 1/2 OF THE S.W 1/4 OF THE N.W. 1/4 OF SEC. 10 T. 38 S. R. 41 E CONTAINING 10 ACRES:

STATE OF FLORIDA
COUNTY OF MARTIN
1928
20th Feb.
28
Plats on Page 13 J.P. Penney

DEDICATION

STATE OF MICHIGAN } SS.
COUNTY OF WAYNE }
KNOW ALL MEN BY THESE PRESENTS: THAT WE L.F. KNOWLES AND FLORENCE HIS WIFE OWNERS OF THE WITHIN DESCRIBED LAND, HAVE CAUSED SAID LAND TO BE SURVEYED AND PLATTED AS SHOWN ON THE ACCOMPANYING PLAT KNOWN AS SCHROEDER'S TUXEDO MANOR AND DO HEREBY DEDICATE TO THE PERPETUAL USE OF THE PUBLIC THE STREETS SHOWN HEREON, RESERVING UNTO THEMSELVES, THEIR HEIRS, LEGAL REPRESENTATIVES OR ASSIGNS, THE REVERSION OR REVERSIONS THEREOF WHENEVER SAID STREETS SHALL BE ABANDONED BY THE PUBLIC OR DISCONTINUED BY LAW, THIS 27th DAY OF JAN. A.D. 1928 SIGNED, SEALED AND DELIVERED IN THE PRESENCE OF
L.F. Knowles
Florence Knowles
OWNERS IN FEE SIMPLE

STATE OF MICHIGAN } SS.
COUNTY OF WAYNE }
I HERBY CERTIFY THAT ON THIS DAY PERSONALLY APPEARED BEFORE ME FLORENCE KNOWLES KNOWN TO ME TO BE THE WIFE OF L.F. KNOWLES, AND SHE ON A SEPARATE AND PRIVATE EXAMINATION TAKEN AND MADE BY AND BEFORE ME SEPARATELY AND APART FROM HER SAID HUSBAND, SAID ACKNOWLEDGE THAT SHE MADE HERSELF A PARTY HERE TO FOR THE PURPOSE OF RENOUNCING, RELINQUISHING AND CONVEYING ALL HER RIGHTS, TITLE AND INTEREST, WHETHER OF DOWER, HOMESTEAD OR OF SEPARATE PROPERTY, STATUTORY OR EQUITABLE IN AND TO THE LAND DESCRIBED HEREON AND THAT SHE EXECUTED THE SAID PLAT, FOR THE USES AND PURPOSES SHOWN HEREON, FREELY AND VOLUNTARILY AND WITHOUT ANY COMPELSION, CONSTRAINT, APPREHENSION, OR FEAR OF OR FROM HER SAID HUSBAND. WITNESS MY HAND AND OFFICIAL SEAL THIS 27th DAY OF JANUARY A.D. 1928
MY COMMISSION EXPIRES Feb. 26, 1930
Paul W. Beardsley
NOTARY PUBLIC

STATE OF MICHIGAN } SS.
COUNTY OF WAYNE }
I HERBY CERTIFY THAT ON THIS DAY PERSONALLY APPEARED BEFORE ME L.F. KNOWLES KNOWN TO ME TO BE THE HUSBAND OF FLORENCE KNOWLES AND HE EXECUTED THE FOREGOING INSTRUMENT FOR THE USES AND PURPOSES SHOWN HEREON. WITNESS MY HAND AND OFFICIAL SEAL THIS 27th DAY OF JANUARY A.D. 1928.
MY COMMISSION EXPIRES Feb. 26, 1930
Paul W. Beardsley
NOTARY PUBLIC

STATE OF FLORIDA } SS. ENGINEERS CERTIFICATE
COUNTY OF MARTIN }
KNOW ALL MEN BY THESE PRESENTS: THAT THE ROAT CONCERNING INC A CORPORATION CREATED AND EXISTING UNDER THE LAWS OF THE STATE OF FLORIDA, HAVE SURVEYED AND PLATTED THE TRACT OF LAND, THE PLAT WHICH IS SHOWN HEREON AND WHICH IS DEDICATED ABOVE AND THE MEASUREMENTS AND ANGLES ARE CORRECT TO THE BEST OF THEIR KNOWLEDGE AND BELIEF AND PERMANENT REFERENCE MONUMENTS HAVE BEEN PLACED AS REQUIRED BY LAW. IN WITNESS WHEREOF THE SAID CORPORATION HAS CAUSED THESE PRESENTS TO BE EXECUTED BY ITS PRESIDENT UNDER ITS CORPORATE SEAL THIS 27th DAY OF JANUARY A.D. 1928
ATTESTED BY:
Wm. H. Roat
SEC. OF FLORIDA STATE CERTIFICATE #111
PRESIDENT
SWORN AND SUBSCRIBED BEFORE ME THIS 27th DAY OF JANUARY 27, 1928
MY COMMISSION EXPIRES Nov. 6th, 1929
John S. Venable
NOTARY PUBLIC

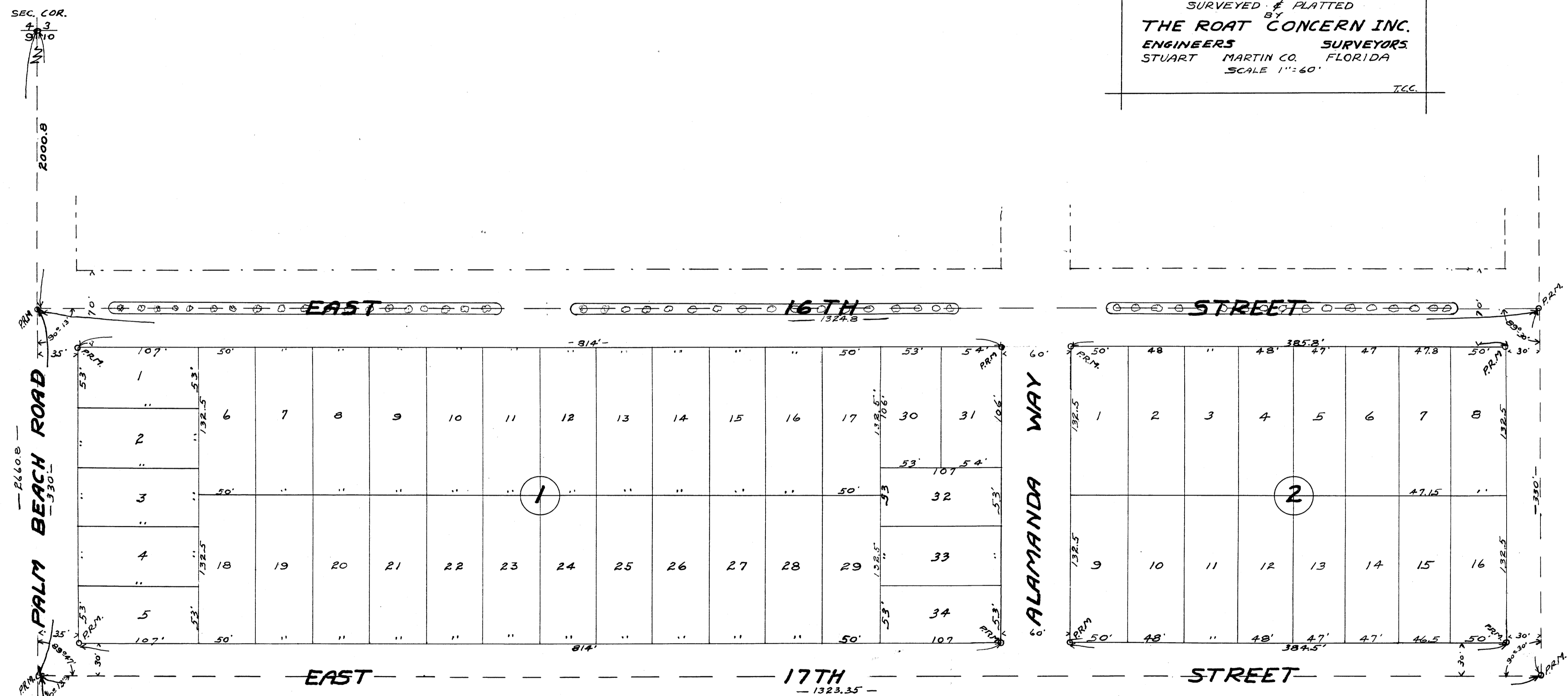
DESCRIPTION

BEGINNING AT A POINT (A) THREE INCH IRON PIPE FILLED WITH CONCRETE ON THE WEST LINE OF SEC. 10 T. 38 S. R. 41 E. WHICH POINT IS 330' NORTH OF THE N.W. 1/4 CORNER OF SEC. 10, THENCE (1) AT AN ANGLE OF 90°15' FROM SOUTH TO EAST RUN 132.35' TO A 3" IRON PIPE FILLED WITH CONCRETE THENCE (2) AT AN ANGLE OF 90°30' FROM WEST TO NORTH RUN 330' TO AN IRON PIPE FILLED WITH CONCRETE THENCE (3) AT AN ANGLE OF 89°30' FROM SOUTH TO WEST RUN 132.8' TO A 3" IRON PIPE FILLED WITH CONCRETE ON THE WEST LINE OF SAID SEC. 10, THENCE (4) AT AN ANGLE OF 90°2' RUN 330' SOUTH TO A 3" IRON PIPE FILLED WITH CONCRETE, WHICH POINT IS ALSO THE POINT OR PLACE OF BEGINNING, CONTAINING 10 ACRES.

STATE OF FLORIDA } SS.
COUNTY OF MARTIN }
STUART FLORIDA JANUARY 27th AD 1928
THIS MAP CHECKED WITH THE PRESENT STREETS AND THE CITY'S REQUIREMENTS, AND IS HEREBY RECOMMENDED TO THE BOARD OF COMMISSIONERS THIS 27th DAY OF JANUARY A.D. 1928 FOR THEIR APPROVAL.
John S. Venable
CITY CLERK

APPROVED BY THE BOARD OF COMMISSIONERS, CITY OF STUART THIS 27th DAY OF JANUARY AD 1928
J. S. Taylor
CITY CLERK

SURVEYED & PLATTED BY
THE ROAT CONCERN INC.
ENGINEERS SURVEYORS
STUART MARTIN CO. FLORIDA
SCALE 1"=60'



APPROVED BY THE PLANNING BOARD, CITY OF STUART
THIS 27th DAY OF JANUARY A.D. 1928
John S. Venable
CITY CLERK

APPROVED BY
Wm. H. Roat
COUNTY SURVEYOR.

NOTE: ALL POINTS MARKED R.P.M. ARE 3" IRON PIPES FILLED WITH CONCRETE WITH NAIL IN CENTER.